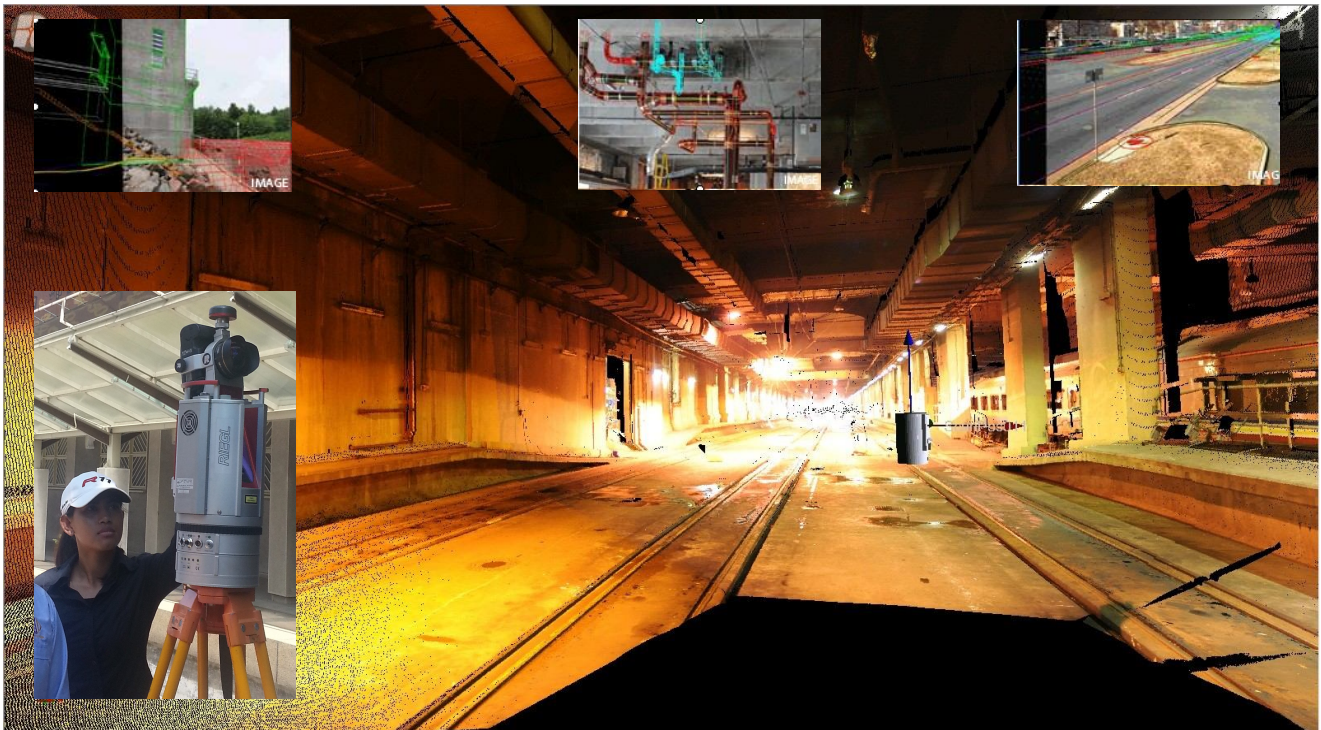




Terrestrial Laser Scanning Advanced Three-Dimensional (3D) Surveying and Modeling

✓ *Fast, Long Range, Safe and Reliable*



APPLICATIONS -

- *Topographical survey, Digital Terrain Modeling*
- *As-built , civil structure, tunnel, industry plant survey*
- *Corridor mapping for Road, Rail etc.*
- *Mining, Slope and Quarry mapping*
- *Transmission line survey, monitoring survey*
- *Building Façade survey*
- *Mapping of Historical or Sensitive site*
- *Urban development, city modeling, virtual reality*

PRICE -

Please contact us

DELIVERABLES -

CAD drawing, Cross-section Volume, Topo/Structure Plan, 3D Data/Model

BENEFITS -

- ✓ *High density point cloud , measure up to 120,000 points per second*
- ✓ *Reliable and detailed records of site conditions*